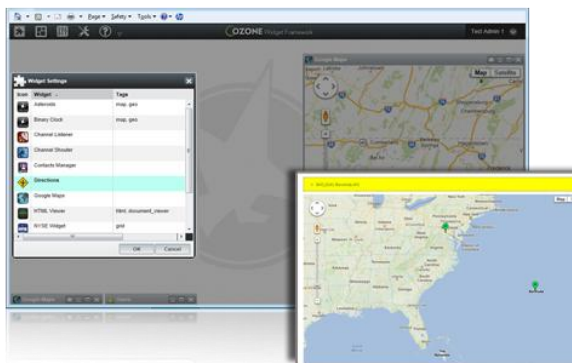




# Software That Soars Government Solutions



## BlackBird Photo Timeline System



Do you have a need to know exactly where that picture was taken - quickly? BlackBird Knows - Drag & Drop an image for instant results.

Drag multiple images to the drop zone and BlackBird will create a pictorial Timeline of not only where the pictures were taken but when.

<http://blackbird.falconlogic.com>

### CAPABILITY

Web, mobile, and widget based map applications

### INDUSTRY

Government

### TECHNOLOGY / SKILLS

HTML 5

.NET

SQL Server

Google Maps

KML

Cesium

### FALCON LOGIC

Herndon, VA

877.303.2526

[www.falconlogic.com](http://www.falconlogic.com)

## DI2E

### Alignment



#### Di2E SvcV-4

BlackBird implements services mapped to Di2E SvcV-4 including Timeline Analysis and Content Search.



#### Di2E Enabler

Product enables Di2E services through KML and interoperability.



#### Di2E Registered

Registered with the Di2E Plugfest eXchange.



#### Di2E Interoperable

Plug and play in the Ozone Widget Framework, ESRI, Palantir, and other KML/DIB services



#### Di2E Secure

Compatible with Di2E ABAC security services



**Widgetized** - Drag a photo from a widget window - drop it into the BlackBird widget - geolocation is extracted from data in EXIF format for proper pin placement on the map!

### Standards Based

BlackBird implements industry recognized KML/SOAP standards. This simplifies integration into your other products.

### Searchable

Search photos by distance/tag/date. Pull KML directly into your own assets. Make JSON service calls from the browser.

### Mobile Collection is here

Enable the warfighter to capture data and upload to shared analyst maps for real-time EXIF extraction and geolocated pin placement!



**falconlogic**  
SOFTWARE THAT SOARS